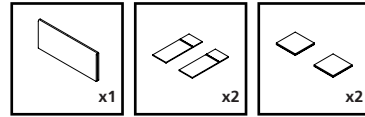


Standard adhesive fixing kit shown for illustration purposes only.

**Note:**

This instruction is applicable for both Contour and Harmony modules.

### Contents



### Additional information

#### Safety

- Installation is to be carried out in accordance with relevant Health & Safety regulations and only to be carried out by a skilled or competent person.
- The product should be installed to comply with the relevant national standards and be inspected and tested prior to being put into service (in the UK BS 7671 Wiring Regulations or BS 6396 Office and Educational Systems Best Practice).
- Product to be used only for the intended purpose of securing power modules to office furniture in office and commercial environments.
- Do not misuse, dismantle or re-configure the product because doing so will invalidate the warranty.

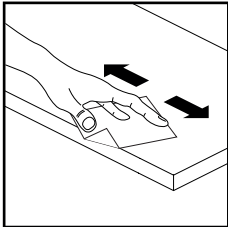
#### Standards

- Refer to the Declaration of Conformity.

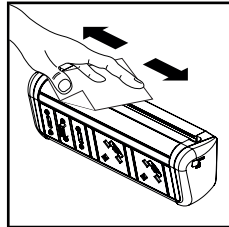
#### Product care

- Clean using a dry cloth. No abrasives or solvents to be used on the product.
- Do not try to reposition module after fixing with adhesive strips. This may reduce adhesion and the ability of the strips to hold the module in place.

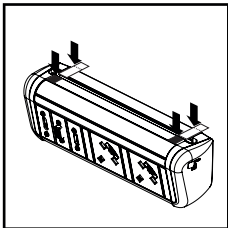
### Preparing fixing location



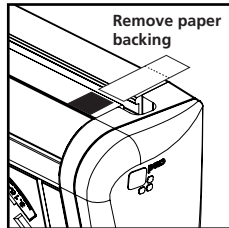
Clean the surface of furniture with supplied cleaning wipe.



Clean the bottom face of the power module ready for the fixings.

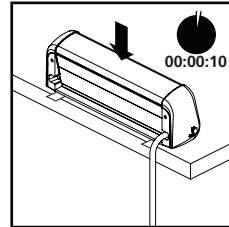


Place felt pads at the front and adhesive strips to the rear as shown.

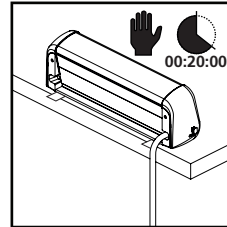


Press down firmly. Red lines on strips should overhang at rear.

### Fixing module in place

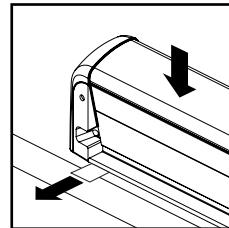


Place module and press down firmly for 10 seconds minimum.

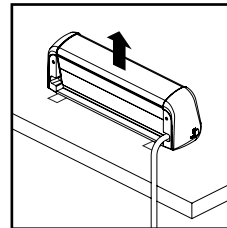


Wait for 20 minutes prior to use to ensure good adhesion.

### Removing adhesive fixings



Apply downward pressure and pull strips away from the module.



The strips will stretch and release from the furniture for removal.

### Disclaimer

The adhesive strips have been rigorously tested to ensure that they function correctly on a wide range of surfaces. However we strongly recommend that you check with the supplier of the furniture prior to use. CMD Ltd will not be held liable for any subsequent damage that may occur during the normal use of this product. Failure to clean the surface will result in a poor bond, as will touching the cleaned areas.

